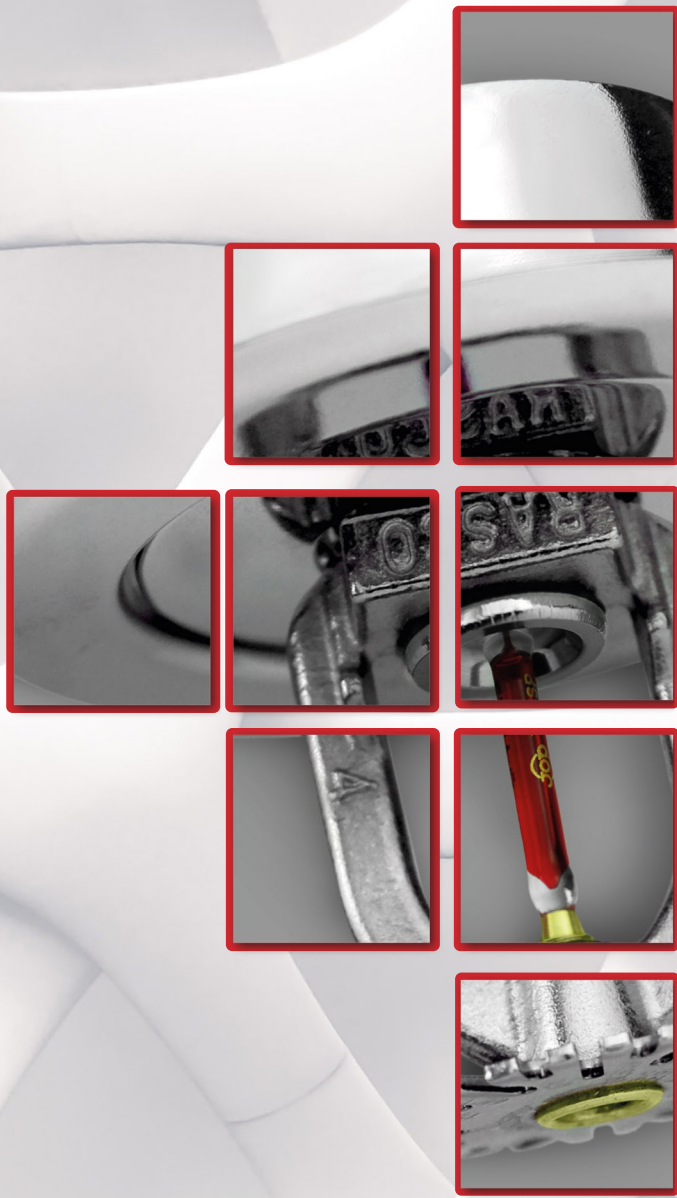


ARI



ABOUT US

Ari Yangin has been serving in the field of fire extinguishing and detection systems since 2007, in the fields of Consulting, Design and Projecting, Product Supply, Installation, Service and Maintenance. It shares its knowledge since 1982 with our customers with its experienced staff.

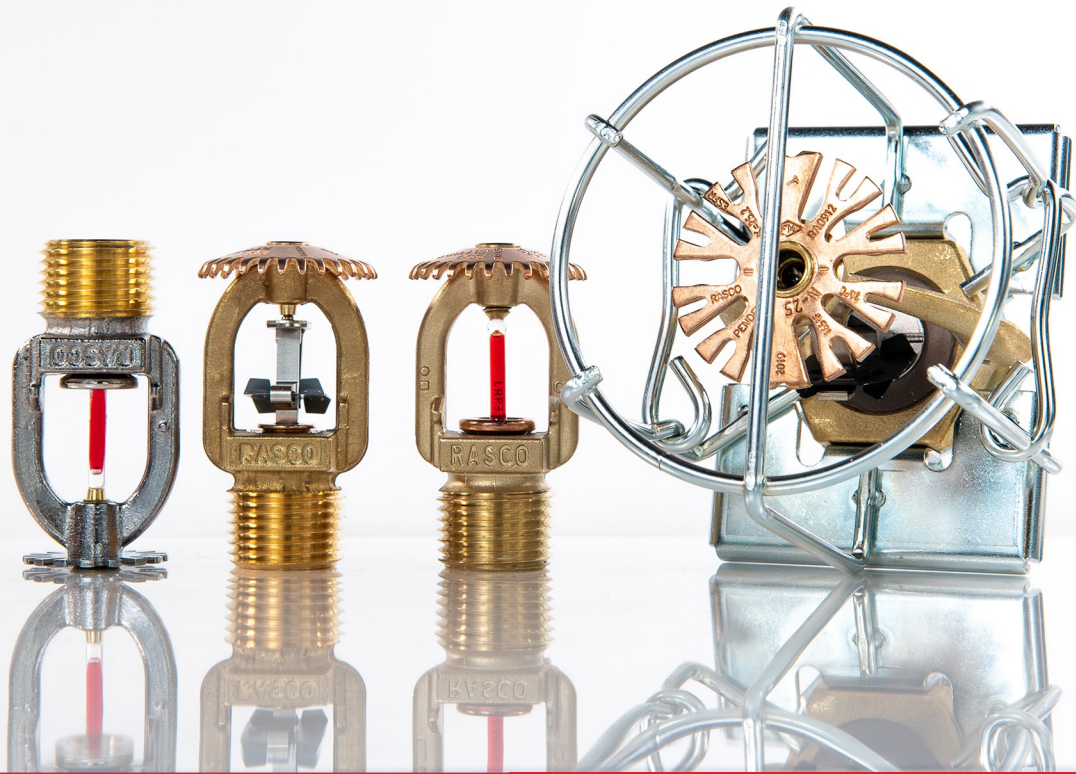
Ari Yangin is seeking solutions to customer demands on fire extinguishing systems with an academic approach. In order to meet all your demands, it bridges you with the world's leading companies in its field. It continues these studies with a focus on customer satisfaction and in accordance with ISO 9001-2008 criteria.



Ari Yangin provides reliable pre-sales, sales and after-sales services to its customers with the principle of "all fire solutions from a single door". It provides pre-sales, system design, project design, consultancy services, as well as technical services such as after-sales, commissioning and periodic maintenance. It offers these services professionally with its certified engineers and technicians.

With this awareness, Ari Yangin will continue its efforts to increase its customer potential and expand its product and service range in domestic and foreign markets, and will continue to raise the bar with each passing day.





OUR SERVICES

Product Supply and Installation Supervision

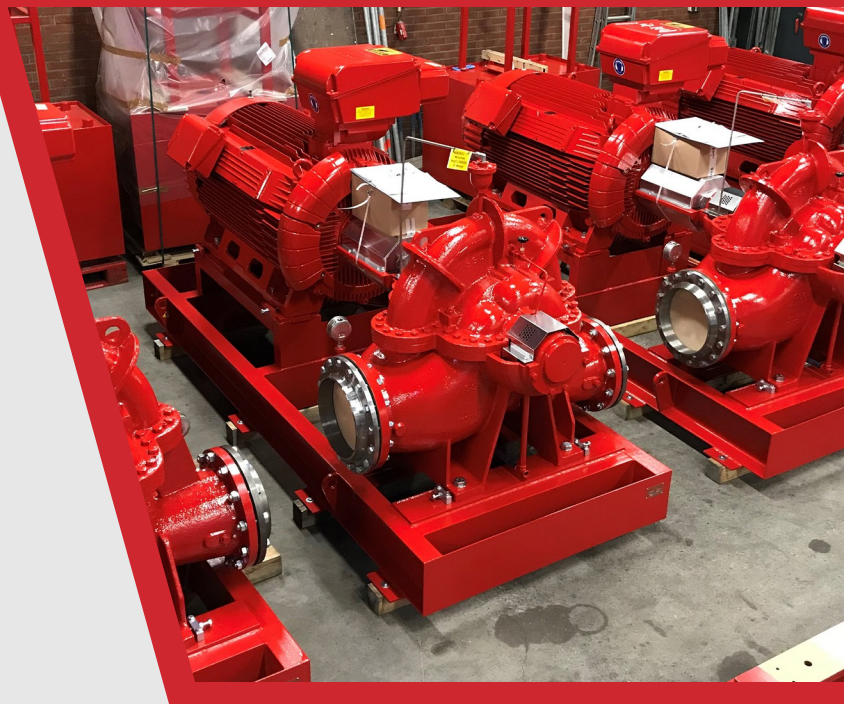
Through representation and distributorship agreements with the best manufacturers in the world, ARI supplies only the top quality products to its customers with strong inventory and short lead times. In addition, ARI provides supervision of assembly and installation of the sold products.

Project Design and Consultancy

Providing the most suitable project design with its expert engineering staff who have mastered the national and international standards, ARI produces the most economical and optimum designs to its customers with the latest technology products and software.

After Sales Service and Periodic Maintenance

As ARI, we believe for the overall system to work as effectively as possible, it must be well set up and operated well. For this purpose, ARI provides the necessary and regular control and maintenance services with its engineering and technical staff.

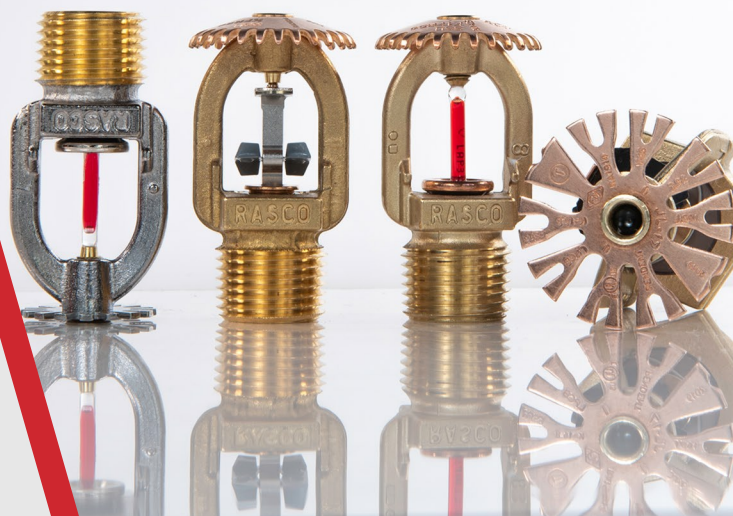


Contracting and Commissioning Services

ARI is able to carry out turn-key installation of fire extinguishing and detection systems that require special applications for the companies that need to have their systems approved by international insurance companies.

FIRE PROTECTION SYSTEMS

Despite today's high technology in Fire Extinguishing Systems, as an extinguishing element, its physical, chemical and commercial advantages as well as its wide application area increase the importance of water one more time. ARI FIRE PROTECTION SYSTEMS's wet pipe, dry pipe, pressure valve, pre-reactive automatic water, foam or water foam mixture extinguishing systems, which are established in accordance with the building hazard class, architectural features and purpose of use, have the capacity to extinguish the existing fire risk in every building and the economic life of the building. It enters into the circuit at the required speed throughout its life and performs its duty at the desired capacity with the highest performance.



AUTOMATIC SPRINKLERS

COMMERCIAL

F1FR SERIES QUICK RESPONSE

F1FR56, F1FRLO

K-factor: 5.6 (80) & 8.0 (115)

Temp °C: 57, 68, 79, 93 & 141

Thread size: 1/2" (15mm) & 3/4" (20mm)

Orientation: pendent, conical concealed, pendent recessed, conventional, recessed HSW sidewall, sidewall & upright



F1 SERIES STANDARD RESPONSE

F156, F1LO

K-factor: 5.6 (80) & 8.0 (115)

Temp °C: 57, 68, 79, 93, 141, 182 & 260

Thread size: 1/2" (15mm) & 3/4" (20mm)

Orientation: pendent, pendent recessed, conventional, sidewall, recessed HSW sidewall & upright



F1FR SERIES QUICK RESPONSE EXTENDED COVERAGE

EC, EC-9

K-factor: 8.0 (115)

Temp °C: 57, 68, 79

Thread size: 1/2" (15mm) & 3/4" (20mm)

Orientation: pendent, pendent recessed, HSW, recessed HSW



Reliable®
TECHNOLOGY • QUALITY • SERVICE



DRY

F3 STANDARD & QUICK RESPONSE

Dry Pendent & Sidewall

K-factor: 8.0 (115) or 5.6 (80)

Temp °C: 57, 68, 79, 93, 141

Thread size: 3/4" (20mm) & 1" (25mm)

Lengths: 2" (50mm) to 48" (1219mm)

Orientation: pendent, pendent recessed, conical concealed, horizontal sidewall, horizontal sidewall recessed.



AUTOMATIC SPRINKLERS

G5 SERIES QUICK & STANDARD RESPONSE

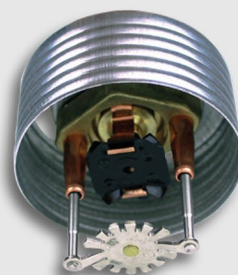
G5-28, G5-42, G5-56, G5-56 300, G5-80.

K-factor: 2.8 (40), 4.2 (60), 5.6 (80), 8.0 (115)

Temp °C: 74, 100,

Thread size: 1/2" (15mm), 3/4" (20mm)

Orientation: concealed pendent



G6 SERIES QUICK RESPONSE

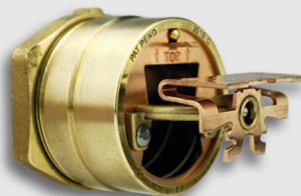
G6-56, G6-80

K-factor: 5.6 (80), 8.0 (115)

Temp °C: 74

Thread size: 1/2" (15mm), 3/4" (20mm)

Orientation: HSW, sidewall



RFC RESIDENTIAL SERIES

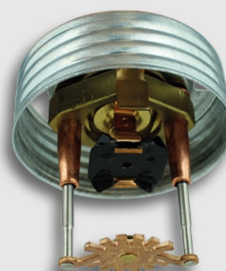
RFC30, RFC43, RFC49, RFC58

K-factor: 3.0 (43.2), 4.3 (62), 4.9 (70.6), 5.8 (84)

Temp °C: 74, 100

Thread size: 1/2" (15mm)

Orientation: concealed pendent



Reliable
TECHNOLOGY • QUALITY • SERVICE

JL14 & JL17 ESFR Suppression Mode Pendent

K-factor: 14.0 (200) & 17.0 (240)
Temp °C: 74 & 100
Thread size: 3/4" (20mm)
Orientation: ESFR pendent

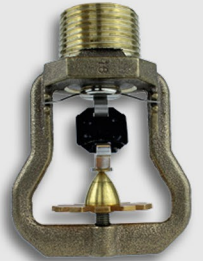
Early suppression fast response solder link sprinkler for high piled storage.



HL22 ESFR Suppression Mode Pendent

K-factor: 22.0 (320)
Temp °C: 74 & 100
Thread size: 1" (25mm)
Orientation: ESFR pendent

Early suppression fast response solder link sprinkler for high piled storage.



N25 ESFR Suppression Mode Pendent

K-factor: 25.0 (360)
Temp °C: 74 & 100
Thread Size: 1" (25mm)
Orientation: ESFR pendent

Design to be shorter to allow piping to be installed further from the ceiling.



STORAGE



AUTOMATIC SPRINKLERS

N252 EXTENDED COVERAGE CMDA & CMSA

K-factor: 25.0 (360)
Temp °C: 74 & 100
Thread size: 1" (25mm)
Orientation: pendent

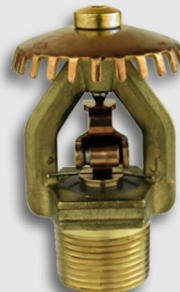
High-piled & Rack storage for extra hazard occupancies. CMDA is available recessed.



J168 Upright CMDA sprinkler

K-factor: 16.8 (240)
Temp °C: 74, 100 & 141
Thread size: 3/4" (20mm)
Orientation: upright

High-piled rack storage, extra hazard occupancies.



GL112 Pendent and Upright CMDA

K-factor: 11.2 (160)
Temp °C: 74 & 100
Thread size: 3/4" (20mm)
Orientation: pendent, upright

Pendent and upright quick response fusible link. Used in high piled and rack occupancies.



GXLO

Upright and pendent CMDA

K-factor: 11.2 (160)

Temp °C: 74, 100 & 141

Thread size: 1/2" (15mm) & 3/4" (20mm)

Orientation: pendent, upright

Standard response storage sprinkler with a large orifice for use in high challenge storage occupancies.



JL112 QUICK RESPONSE

Extended Coverage, Light & Ordinary Hazard

K-factor: 11.2 (160)

Temp °C: 68, 74, 93, 100

Thread size: 3/4" (20mm)

Orientation: pendent and upright



AUTOMATIC SPRINKLERS

F1FR SERIES QUICK RESPONSE

F1FR56, F1FRLO Intermediate

K-factor: 5.6 (80), 8.0 (115)

Temp °C: 57, 68, 79, 93 & 141

Thread size: 1/2" (15mm) & 3/4" (20mm)

Orientation: intermediate pendent and upright



F1 SERIES STANDARD RESPONSE

F156, F1LO Intermediate

K-factor: 5.6 (80), 8.0 (115)

Temp °C: 57, 68, 79, 93, 141 & 182

Thread size: 1/2" (15mm) & 3/4" (20mm)

Orientation: intermediate pendent and upright



GUARDS & SHIELDS

UL & FM Approved

Model C and model D sprinkler guards

Note: Guards are approved with FM & UL to be used with specific sprinkler types for in-rack protection.



COVER PLATES

COVER PLATE FINISHES

STANDARD, SPECIAL APPLICATION,
PERFORATED, CUSTOM

Reliable cover plates are available in 2 standard finishes: bright chrome and white paint. 7 special application finishes: bright brass, black plating, black paint, stainless steel, off white, satin chrome and bronze. Cover plates are also available perforated.

Custom colours can also be provided.
Please allow additional time. All custom finishes must be done by Reliable.



AUTOMATIC SPRINKLERS

NOZZLES

MODEL A SPRAY NOZZLE 1/4" (6MM)

Brass and Bronze Non-Automatic Fixed Pattern

Solid cone discharge

No moving parts, no orifice less than

Three (3) orifice sizes and three (3) discharge angles



OPEN WINDOW

Model B and FM

Water curtain spray pattern

Maximum pressure: 100 PSI

Three (3) orifice sizes

Model FM distributes a larger volume of water.



OPEN CORNICE

Model FM

Narrow fan shaped water curtain maximum pressure: 100 PSI

Two (2) orifice sizes



Reliable®
TECHNOLOGY • QUALITY • SERVICE

SYSTEM VALVES

E/E3 WET ALARM VALVE

UL, FM, LPCB & VdS approvals

The E/E3 valve is made expressly for all wet-pipe sprinkler systems. Available with either groove, groove x flange or flange end connections. Specific trims are available to suit individual approval and regional requirements: UL, FM, LPCB and VdS.



DDX DELUGE VALVE

UL, FM, LPCB & VdS approvals

The DDX valve by Reliable is a versatile valve that can be suited to nine different systems: electric deluge, wet pilot deluge, dry pilot deluge, wet pilot single interlock preaction system, dry pilot single interlock preaction system, electric single interlock preaction system, type D double interlock preaction system, type F double interlock preaction system and low pressure dry pipe system. The DDX valve is also available in 316 Stainless Steel to resist corrosion.



DRY PIPE VALVE

UL, FM, LPCB & VdS approvals

Dry pipe valves make sprinkler system installations possible in buildings where freezing temperatures prevail. Reliable's range of dry pipe systems includes the model A, D, EX and DDX.



PREACTION SYSTEMS

UL, FM, LPCB & VdS approvals

A preaction system is a sprinkler system that utilises closed sprinklers connected to a water supply through a deluge valve trimmed for preaction operation.

Non-Interlock

Fully activated by either a signal from a detection system or from loss of pneumatic pressure.

Single-Interlock

Wet, dry or electric actuation single interlock types.

Double-Interlock

Pneumatic/electric or electric/ electric actuation double interlock types.



SYSTEM COMPONENTS



FLANGED CHECK

Pressure: 21 BAR/ 300 PSI
ANSI & PN16 sizes: 50mm (2") to 300mm (12")
UL & FM approved



MODEL G CHECK VALVE

Pressure: 17.25 BAR/ 250 PSI
Sizes grooved: 65mm (2.5") to 200mm (8"). UL & FM approved.



BUTTERFLY

Pressure: 21 BAR/ 300 PSI
British standard grooved: 50mm (2") to 300mm (12")
British standard wafer: 50mm (2") to 300mm (12")
FM & UL: Grooved: 73mm (2.5") to 200mm (8")
FM & UL Wafer: 65mm (2.5") to 200mm (8")



OS&Y GATE

Pressure: 21 BAR/ 300 PSI
Sizes grooved: 73mm (2.5") to 300mm (12")
Sizes grooved x flanged: 65mm (2.5") to 300mm (12")
Sizes flanged: 65mm (2.5") to 300mm (12")
Available in ANSI 150 & PN16



NRS GATE

Pressure: 21 BAR/ 300 PSI
Sizes: 65mm (2.5") to 300mm (12")
UL & FM approved
Available in ANSI 150 & PN16

RASCOFLEX

UL, FM, VdS & LPCB approvals

RASCOFLEX from Reliable is the flexible sprinkler hose for systems which sets new standards for simplicity. The innovative design of RASCOFLEX easily positions the sprinkler in the centre of the ceiling tile at the correct height to significantly reduce installation times. This incredibly efficient system is available in 5 different lengths, two different reducers, two inlets and two outlet nipples.



NITROGEN SYSTEMS

The N2-Blast Corrosion Inhibiting System

For dry and pre-action fire protection systems. Designed and manufactured by South-Tek Systems, the leader in nitrogen generation technology. 98%+ pure nitrogen that effectively inhibits electrochemical, galvanic and microbiologically influenced corrosion, as well as moisture accumulation and ice plugs.



TEST AND DRAIN VALVE

RASCO BRANDED

RASCO Test and Drain Valve operates with water and compressed air. It has a working pressure of 16BAR and an operating temperature of 60 °C.



ELECTRICAL EQUIPMENT

UL, FM, LPCB & VdS approvals

Reliable are international partners of System Sensor sprinkler monitoring devices. During a fire condition, sprinkler system reliability is critical, whether it's the operation of a sprinkler head or the monitoring of the sprinkler system itself. Reliable offer supervisory switches, series water flow detectors, EPS pressure switches and explosion proof devices.



FIRE PUMPS

HORIZONTAL AND VERTICAL SPLIT CASE



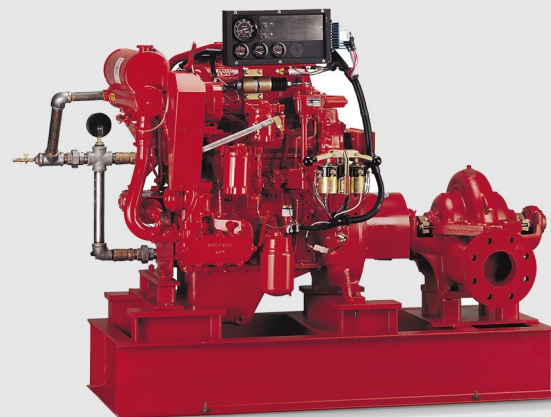
Horizontal Split Case Pump Features:

- UL listed/FM approved NFPA-20 design
- Flows from 250 to 5000 GPM
- Pressures from 40 to 245 psi (40 to 190 psi at 50Hz)
- Diesel and electric driven



Vertical Split Case Pump Features:

- UL listed and FM approved NFPA-20 design
- Flows from 250 to 2500 GPM
- Pressures from 40 to 200 psi (40 to 155 psi at 50Hz)
- Space-saving design



 **PENTAIR**
FAIRBANKS NIJHUIS

VERTICAL TURBINE AND VERTICAL IN-LINE



Vertical Turbine Pump Features:

- UL listed and FM approved NFPA-20 design
- Flows from 500 to 4500 GPM
- Pressures from 70 to 387 psi
- Special materials for seawater applications
- Diesel and electric driven

Vertical In-Line Pump Features:

- UL listed and FM approved NFPA-20 design
- Flows from 50 to 1500 GPM
- Pressures from 40 to 160 psi (40 to 120 psi at 50Hz)
- Space-saving design



FIRE PUMP HOUSES

- Designed to meet specific environmental requirements
- All-steel building
- Easy access entries
- Electric heaters with built-in thermostat
- Continuous duty exhaust fan
- AC motor/solenoid operated louver
- Interior fluorescent and flood light, exterior 70 W HPS light
- Sprinkler system per NFPA
- Finished through wall or floor penetration
- Mini power zone
- Interior wall liner

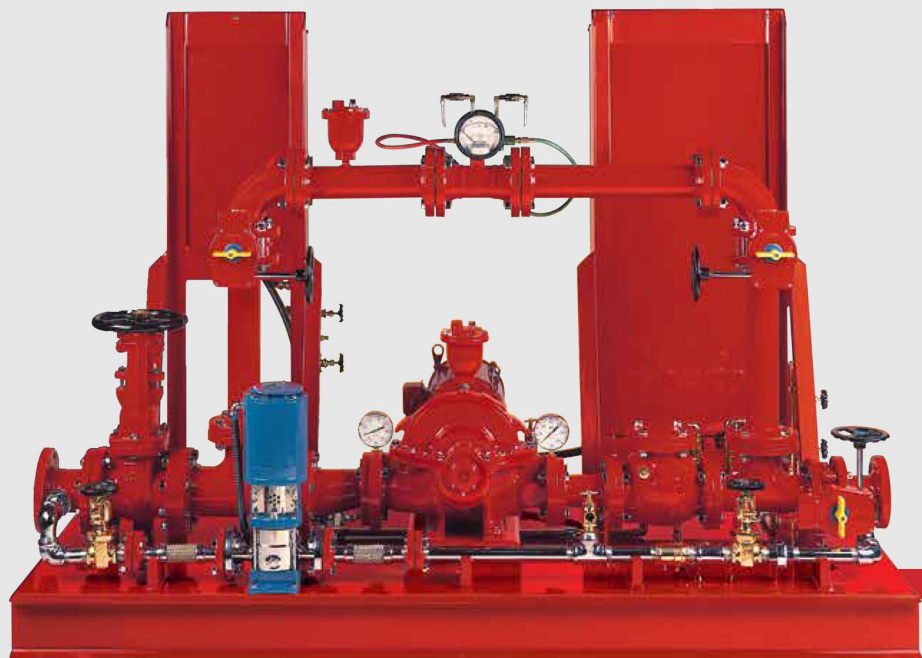


 **PENTAIR**
FAIRBANKS NIJHUIS

PACKAGED FIRE PUMP

Each unit complete with Fairbanks Nijhuis fire pump, Fairbanks Nijhuis jockey pump, controllers and associated pressure sensing lines, valves, piping and electrical wiring.

- Built to NFPA 20 and NEC standards
- ISO 9001 Facility
- UL listed/FM approved components
- All packaged systems hydrostatically tested
- Packaged systems performance test available
- Electric or diesel driven
- Skid-mounted or completely housed
- Single source responsibility
- ETL third party listed



MUNICIPAL SEWAGE TREATMENT

Solids-handling pumps can be found in a multitude of municipal sewage treatment plant applications, ranging from raw sewage influent and return activated sludge, to filter backwash and effluent. Available in capacities to 150,000 GPM (34,000 m³/h). Fairbanks Nijhuis pumps for municipal sewage treatment include:

- Centrifugal solids-handling pumps
- Angleflow solids-handling pumps
- Vertical turbine solids-handling pumps
- Vortex pumps



MUNICIPAL LIFT STATIONS

GROUND WATER APPLICATIONS

Supplying water to treatment systems from wells, lakes, ponds, rivers and basins, including pumps for flood control require pumps of various configurations.

Fairbanks Nijhuis pumps designed for municipal ground water applications include:

- Vertical turbine
- Vertical mixed flow
- Vertical axial flow pumps

For submersible applications for raw sewage and wastewater, Fairbanks nijhuis offers centrifugal solids-handling pumps, angleflow solids-handling pumps, vertical turbine solids-handling pumps and vortex pumps. For portable water booster lift stations throughout municipal systems, split case and vertical turbine pumps are generally the answer.

MUNICIPAL WATER SUPPLY

Supplying water within a municipality demands a multitude of options and capacities, booster systems and more. Fairbanks Nijhuis pumps for these purposes deliver with capacities from 75,000 GPM to 1,000,000 GPM (17,000 m³/h to 227,000 m³/h) and include:

- Vertical turbine
- Vertical mixed flow
- Vertical axial flow
- Horizontal split case centrifugal pumps

MUNICIPAL PUMPS

Solids-Handling Pumps

5400 Series Dry-Pit, Bilttogether and Close-Coupled
2400 Series Dry-Pit, Close-Coupled
5700 Series Dry-Pit, and Close-Coupled Angleflow
Capacities: 15 to 75,000 GPM (3.5 to 17,000 m³/h);
Heads: 5 to 300 feet (1.5 to 91.5 m)



Submersible Solids-Handling Pumps 5430M&W, 5730K&W & 2430M&W Series

Capacities: 15 to 8,000 GPM
(3.5 to 1,820 m³/h)
Heads: 5 to 290 feet
(1.5 to 88.5 m)



Immersible Solids-Handling Pumps M5430WD Series

Capacities: 15 to 75,000 GPM
(3.5 to 1,700 m³/h)
Heads: 5 to 300 feet
(1.5 to 91.5 m)



4500C, 4600CE & 4700E Series Vortex Pumps

Capacities: 50 to 3,000 GPM
(11 to 680 m³/h)
Heads: To 200 feet
(61 m)



Single-Stage Horizontal Split Case Pumps 2800 & 5800 Series

Capacities: 100 to 75,000 GPM
(22.7 to 17,000 m³/h)
Heads: 10 to 2,000 feet
(3 to 610 m)



HRO 7000 Turbine Pump

Capacities: 700 to 3,700 GPM
(159 to 840 m³/h)
Heads: To 300 feet (91.5 m)

Vertical Turbine Pumps 7000 Series

Capacities: 40 to 50,000 GPM
(9 to 11,350 m³/h)
Heads: 10 to 1,000 feet
(3 to 305 m)



Axial Flow Propeller Pumps 8000 Series

Capacities: 500 to 1,000,000 GPM
(112 to 227,000 m³/h)
Heads: 2 to 80 feet
(0.6 to 24.5 m)



Vertical Turbine Solids-Handling Pumps VTSH Series

Capacities: 5,000 to 70,000 GPM
(1,135 to 15,900 m³/h)
Heads: 10 to 110 feet (3 to 33.5 m)

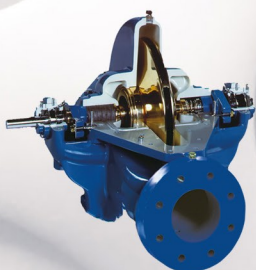


PIPELINE BOOSTER AND HIGH PRESSURE PUMPS

Pentair pump family has a variety of pump materials to tackle your most demanding high pressure applications.



Pentair's ANSI B73.1 standard dimensional process pump provides a versatile workforce. These pumps are available in a variety of building materials from 316 SST to titanium. Capacities up to 5600 gpm and heads up to 550 feet, this pump is also ideal for many chemical and transfer fluid applications.

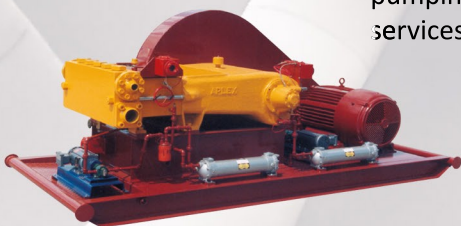
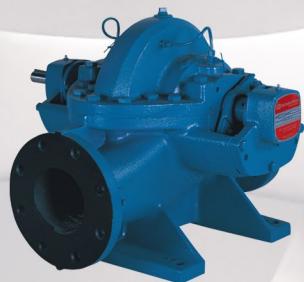


Pentair's horizontally split casing pumps deliver capacities up to 75,000 gpm and heads up to 1,200 feet. These pumps can operate under many general fluid pumping applications services. There are many models available that meet API 610 standards.



DOMESTIC WATER PUMPS

Pentair's horizontally split casing pumps deliver capacities up to 75,000 gpm and heads up to 1,200 feet. These pumps can operate under many general fluid pumping applications services.



SALTWATER INJECTION OPERATIONS

Pentair's piston pumps are designed to fulfill 24-hour continuous operating conditions. These units can handle up to 340 hp at 3600 psi.



FIRE EXTINGUISHING PUMPS

Pentair offers a complete range of pumps to meet your fire protection needs for onshore, offshore and coastal intersections: end suction, vertical in line, horizontal and vertical split casing, vertical turbine, foam and water mist pumps. By offering both electric and diesel drives, we can design and manufacture complete package systems to suit your specific requirements. For harsh environments and applications, in addition to standard building materials, Pentair's split-body and vertical turbine pumps are available in 316 SST, duplex and super duplex, and Nickel Aluminum Bronze. All fire pumps and packages are manufactured to NFPA 20 and NEC standards with UL Listed, FM Approved components.

Pentair's horizontal multistage pumps are available at pressures up to 2000 psi (1400 mlc) and are manufactured in a variety of materials. This pump is ideal for surface pumping due to its smaller footprint, improved efficiency and lower maintenance costs than other competitive systems.



SEA WATER TRANSPORT PUMPS

Pentair's vertical turbine pumps and mixed flow models are designed to meet the unique needs of high flow capacity / low pressure conditions.



COOLING TOWER PUMPS

Pentair's tradition of being a leader in vertical turbine and split-body pumps continues with the durable and heavy-duty Pentair vertical turbine family and split-body pump products designed to operate successfully in a wide range of water sources such as raw water inlet, liquid transfer, cooling water circulation, auxiliary service, rainwater, flood control, marine, process services, volatile liquids, condensate, fuel pumps and mine dewatering.

CIRCULATION WATER PUMPS

Pentair's tradition of leadership continues with these qualities in the production of vertical mixed and axial flow impeller pumps. Designed for medium to high volume (fluid movement at medium to low discharge pressures, both product lines have excellent low NPSH requirements and are separated only by the amount of head or pressure to be developed.

The advantages of mixed flow pumps include minimal footprint, no feed required. In addition, vertical mixed flow pumps can be easily adapted to a variety of design codes, interchangeable for changing hydraulic conditions, and generally experience less wear due to the lower operating speeds they require. Pentair vertical axial flow impeller pump applications are found in a variety of markets, including urban and rural municipal water, government, industrial, irrigation and more.

BOILER SUPPLY PUMPS

With the 7600 series, the turbine pump Pentair brings its centuries-old experience to the top. The 7600 series pump is a horizontal, radially split multistage pump for high pressure service. The 7600 series allows 30-50% fewer steps, 10+ points higher efficiency, the use of smaller motors and less power consumption and available pressures of up to 2000 psi (1400 mlc), resulting in cost limitation and maximizes other operational efficiencies for the user.

GENERAL SERVICE PUMPS

The Pentair end-suction series and ANSI Std.B73.1M pumps are one of the most comprehensive range offerings available. Vertical mounts, inline mount, and even sump pumps are available with Pentair pumps. Depending on the model, both flanged and threaded connections are available.

RAW WATER INLET PUMPS

Pentair's Fairbanks Nijhuis product line has extensive experience in both vertical turbine and horizontal split case pumps in raw water intake services. High reliability and robust construction maximize service life, while high efficiency reduces power consumption.



FIRE WATER PUMPS

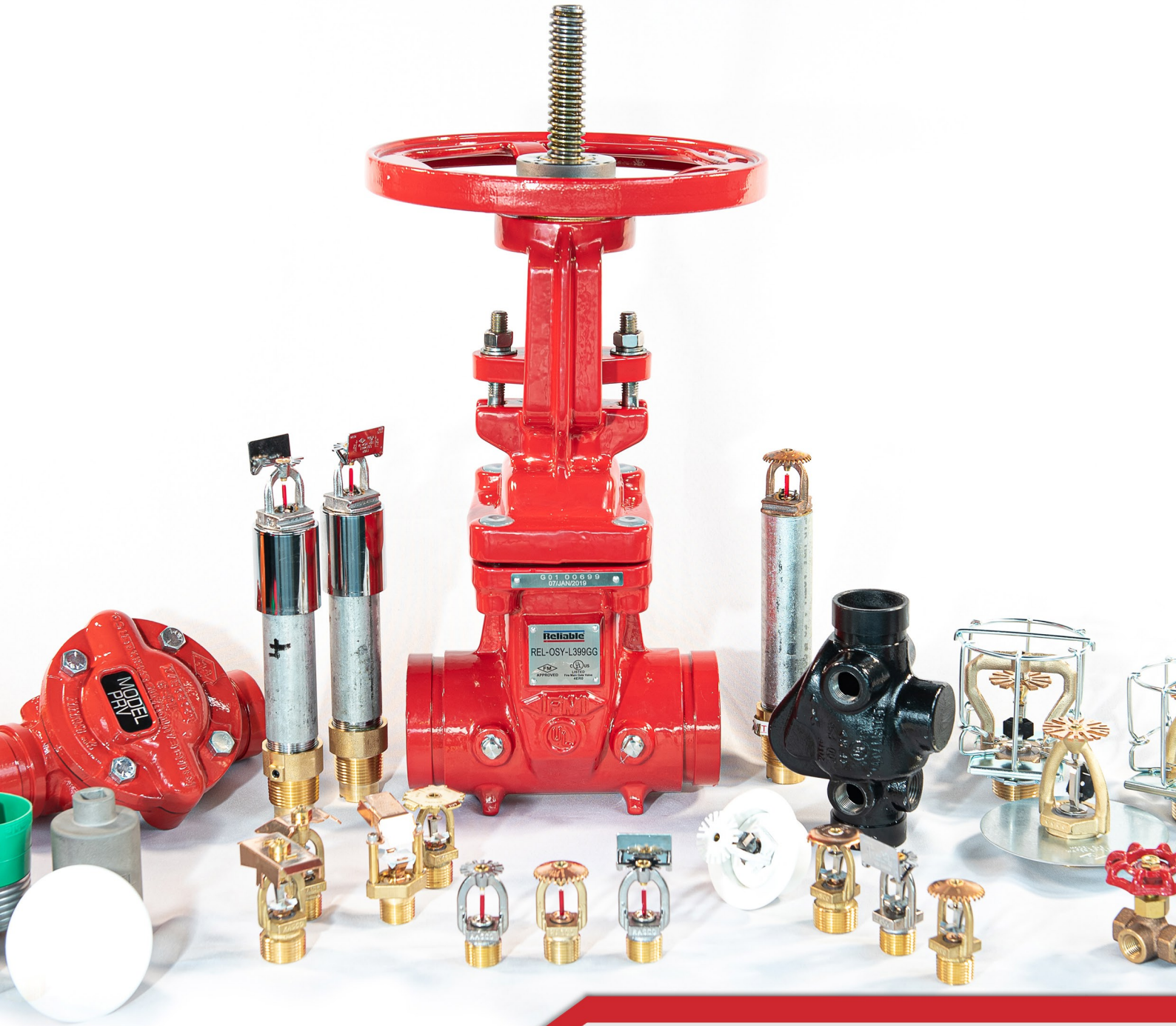
With its Fairbanks Nijhuis series of products, Pentair is the world leader in UL / FM, NFPA 20 fire pumps. Vertical turbine, horizontally split case, vertically mounted split case, in-line and end suction label fire pumps are available.



ASH SLUICE PUMPS

Pumping fly ash in water suspension is a difficult task for a pump, Pentair's Fairbanks Nijhuis 4500/4600/4700 series high chrome iron, flush-mounted impeller pumps are up to the task. They can also be used in other abrasive services that require 600+ Brinell Hardness to resist wear and premature failure.





ARIYANGIN KORUNUM SİSTEMLERİ SAN. ve TİC. A.Ş.

Koşuyolu Mah.Cevat Paşa Sok. No:19 34718

Kadıköy/İstanbul

Telephone : +90 (216) 340 86 50 pbx

Fax: +90 (216) 340 86 54

E-Mail: info@ariyangin.com.tr

